

1:1

MKEXCC0020

www.vieropaints.it

Viero

VISOLSILICA OT FINE



Visolsilica OT Fine

Potassium silicate based wall coating, trowelled texture

VISOLSILICA OT is a coloured, trowelled texture, potassium silicate based wall coating in paste form available in three grain sizes (Extra –fine 0,7mm, Fine 1mm, Medio 1,5mm). It is specifically indicated for external and internal finishes of old mineral substrata such as cement, concrete and rendered mortars, that have to be restored and consolidated. It is also highly indicated on new buildings, in any case, whenever one wants to attain the maximum permeability to water vapour with low water absorption. It has excellent characteristics of colour stability, long duration in time and has a low dirt pick-up. It is not flammable, ecological and has excellent, natural resistance to fungi and bacterial attacks.. It is easy to apply and has the soft and natural appearance typical of mineral coatings.

After a period of about 24 from the application of the priming undercoat, apply an even and uniform coat of VISOLSILICA OT with a stainless steel trowel in a thickness equal to the size of the grains contained in the product.

VISOLSILICA OT FINE and MEDIUM

- While the coating is still fresh, pass over either with a plastic or a stainless steel trowel in vertical or rotary movements to texture and smoothen the finish.

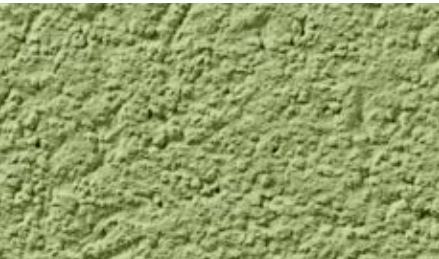
VISOLSILICA OT EXTRA-FINE

- After about 24 hours, apply the second coat of VISOLSILICA OT EXTRA-FINE as above.
- While the second coat is still fresh, pass over with either a stainless steel trowel or a sponge trowel to level the finish and attain the type of texture desired:
For a thin mortar type finish: Use a sponge trowel in very light rotary movements.
For a smoother finish: Use a small stainless steel trowel, pressing hard in small upward uneven, movements to smoothen the surface well.

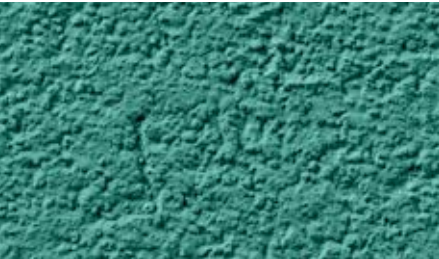
Extra-Fine: 2 – 2.5 kg/m² in 2 coats
Fine: 1.5 – 2 kg/m² in 1 coat
Medium: 2.5 – 3 kg/m² in 1 coat

Interiors and Exteriors

The colours shown are indicative only



VS01



VS02



VS03



VS04



VS05



VS06



VS07



VS08



VS09



VS10



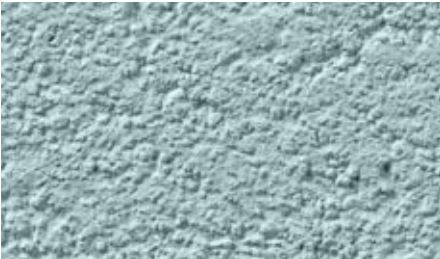
VS11



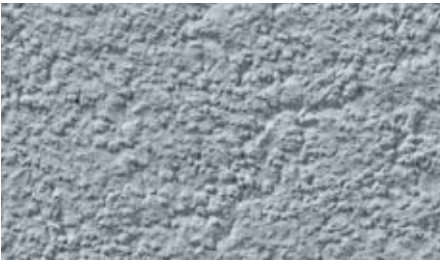
VS12



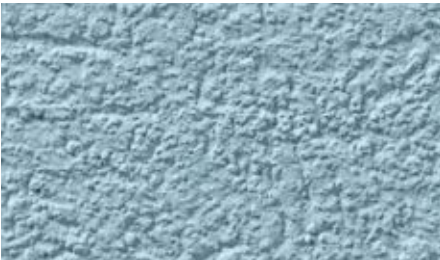
VS13



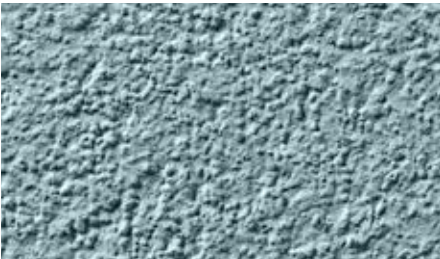
VS14



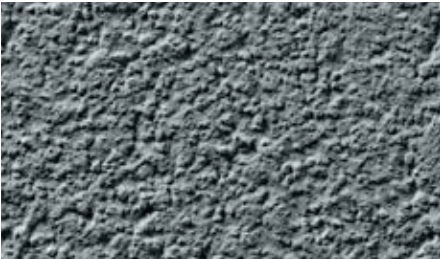
VS15



VS16



VS17



VS18



VS19



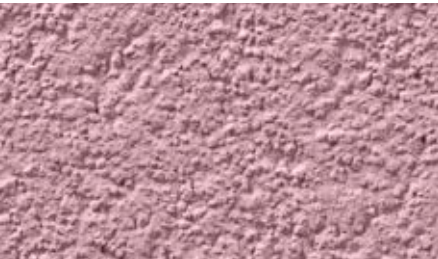
VS20



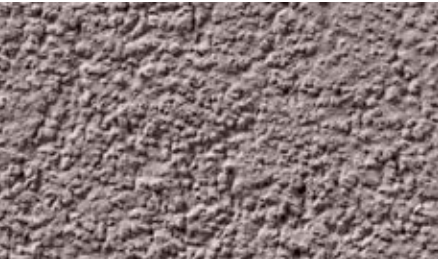
VS21



VS22



VS23



VS24